

REZIDE

Every home has a story.
We tell it...

REZIDE

info@rezide.group | www.rezide.group | 01509 274474

GREENHILL

Ulverscroft, Leicestershire

WWW.REZIDE.GROUP

Greenhill is a private estate of exceptional quality, conceived through a remarkable vision and realised through outstanding architecture, craftsmanship and landscape design.

Set within approximately forty acres of formal gardens, woodland and countryside, the estate offers a rare combination of scale, privacy and refinement.

House and landscape exist in complete harmony, creating a home of enduring character, remarkable presence and quiet distinction.

Arguably one of Leicestershire's most significant modern private estates, Greenhill represents an increasingly rare opportunity to acquire a residence of such scale, quality and setting.

It is our privilege to present Greenhill.



Zachary Oldershaw
Founder

REZIDE

 07712263185
Zachary@rezide.group

GREENHILL

A private estate of architectural clarity and enduring presence.



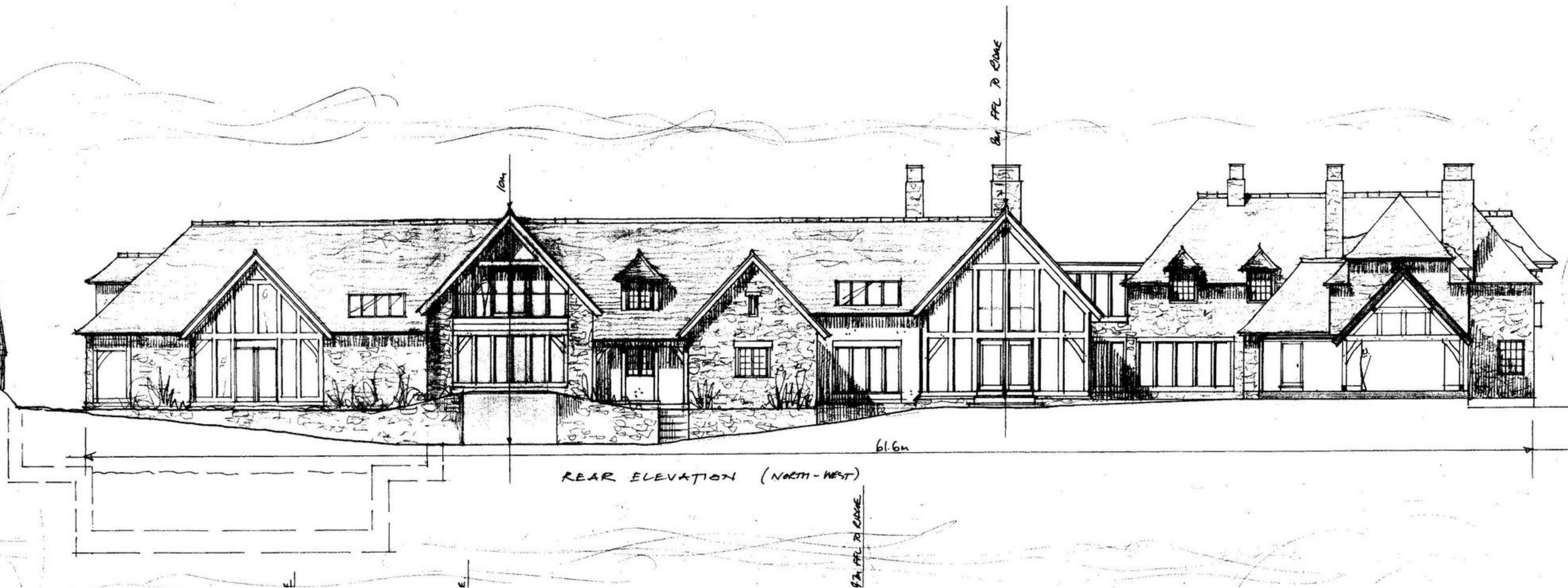
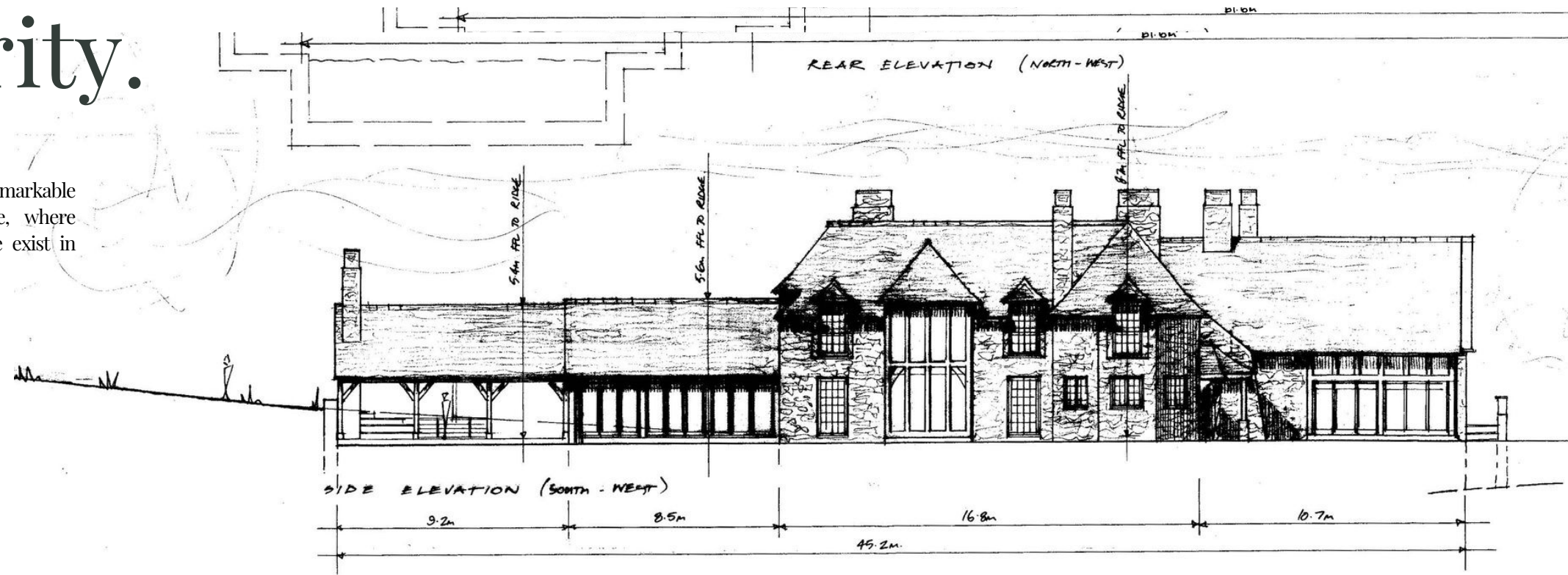


Designed with intent. Built with integrity.

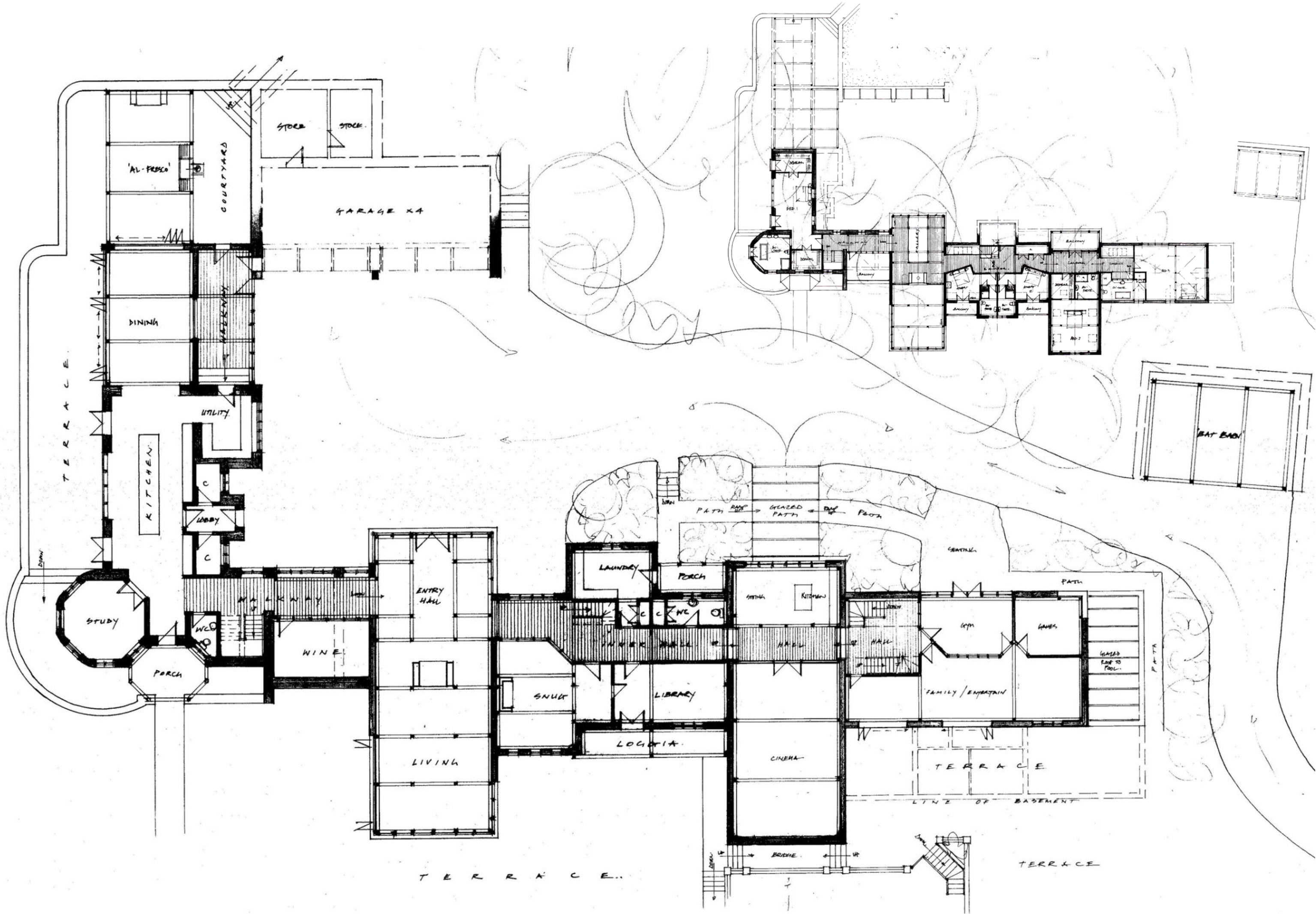
Positioned within one of Leicestershire's most sought-after settings, Greenhill is a home defined by both scale and sensitivity. Set within approximately forty acres of landscaped grounds and natural woodland, the house extends to over 15,000 sq ft and has been thoughtfully conceived to balance architectural presence with a sense of calm, considered living.

Every aspect of the estate reflects an unwavering commitment to quality, from the craftsmanship of the oak-framed structure to the carefully orchestrated relationship between house, garden and landscape.

The result is a residence of remarkable character and quiet confidence, where architecture, setting and lifestyle exist in complete harmony.







A Home With Provenance



Greenhill is the result of a carefully considered vision — one that sought to create a home of enduring quality, rooted in craftsmanship, authenticity and architectural integrity.

Originally conceived by PJT Design and brought to life in collaboration with Oakwrights, the house combines traditional materials with contemporary design in a manner that feels both purposeful and timeless.

Green oak framing, meticulous detailing and a strong architectural rhythm define the structure, whilst natural light plays a central role in shaping the character and atmosphere of the internal spaces.

Throughout the house, craftsmanship takes precedence over fashion. Materials have been selected not simply for their appearance, but for their ability to age gracefully and endure for generations.

The result is a residence that feels established rather than new, refined rather than ostentatious, and entirely at home within its setting.



A Setting of Distinction

Greenhill occupies a private and elevated position on Priory Lane, within the rolling landscape of Ulverscroft, one of Leicestershire's most desirable and enduring residential settings.

Surrounded by open countryside, mature woodland and far-reaching views, the estate enjoys a remarkable sense of seclusion whilst remaining well connected to Loughborough, Leicester and key transport links beyond.

Few locations offer such a compelling balance of privacy, accessibility and natural beauty. It is a setting defined not only by its character, but by its rarity.

For generations, Priory Lane has been regarded as one of the county's most coveted addresses, with opportunities to acquire estates of this scale and calibre seldom arising.





The Approach.

A sense of arrival.

The approach to Greenhill is intentionally understated.

A long private driveway leads through the landscape, gradually revealing the estate as it emerges from its surroundings.

There is no immediate display of scale. Instead, the architecture unfolds with quiet confidence, allowing the setting, craftsmanship and composition of the house to reveal themselves over time.

It is this carefully orchestrated sense of progression that defines the arrival, measured, considered and quietly impressive.







Light, Volume & Connection.

At the heart of Greenhill lies a series of beautifully proportioned living spaces, carefully designed to feel both expansive and intimate.

Double-height volumes, exposed oak framing and thoughtfully positioned glazing create a seamless relationship between house and landscape, drawing natural light deep into the interior whilst maintaining a sense of warmth and comfort throughout.

The result is a home that feels as connected to its surroundings as it does to the people who live within it.

These are spaces designed not merely to be admired, but to be lived in — equally suited to large-scale entertaining, quiet moments of retreat and the rhythm of everyday family life.





Kitchen & Living.

Designed for Living

The kitchen and informal living spaces form the natural heart of Greenhill — places where daily life unfolds with ease. Thoughtfully planned and beautifully executed, these rooms balance practicality with design integrity, creating spaces that feel both highly functional and effortlessly welcoming.

Generous glazing and direct connections to the terraces and gardens encourage a seamless flow between inside and out, allowing the landscape to become an extension of the living environment.

Whether hosting family gatherings, entertaining friends or enjoying quieter moments of everyday life, these spaces have been designed to support the rhythms of modern living with comfort and ease.





Private Spaces.

Calm, Considered and Private

The bedroom suites at Greenhill have been thoughtfully positioned to maximise privacy, outlook and natural light.

Each has been designed with a focus on proportion, simplicity and comfort, creating a series of calm and restorative spaces within the wider home.

Generous glazing frames views across the gardens, woodland and surrounding landscape, reinforcing a strong connection to the setting whilst maintaining a sense of seclusion.

Together, the private accommodation offers a quiet retreat from the rhythm of daily life — elegant, understated and entirely in keeping with the character of the estate.





Leisure & Wellbeing.

Spaces dedicated to balance and restoration.

Beyond the principal living accommodation, Greenhill offers a collection of thoughtfully integrated spaces dedicated to health, wellbeing and recreation.

A private swimming pool, sauna and gymnasium provide facilities more commonly associated with a luxury retreat, whilst remaining seamlessly connected to the rhythm of daily life.

Complementing these spaces is a dedicated games room – a place designed for relaxation, enjoyment and informal gathering.

Carefully considered and beautifully executed, each element contributes to a lifestyle centred on comfort, balance and wellbeing.



Crafted Spaces.

Spaces designed to enrich daily life.

Throughout Greenhill, a series of carefully considered spaces extend beyond the requirements of everyday living, adding depth, character and versatility to the home.

A substantial wine room provides an impressive setting for collection and display, whilst a dedicated cinema room creates an immersive environment for entertainment and relaxation.

The garden pavilion offers a unique space for gathering and retreat, blurring the distinction between house and landscape whilst enjoying views across the surrounding grounds.

Together, these spaces reflect the same commitment to craftsmanship, detail and architectural integrity found throughout the estate.









The Kitchen Garden.

Productive by design.

Reflecting the estate's connection to the landscape, the kitchen garden combines practicality with beauty in equal measure. Raised beds, structured planting and a traditional greenhouse create a productive growing environment capable of supplying seasonal produce throughout the year.

Adjacent to the kitchen garden, the outdoor kitchen and entertaining terraces provide a natural setting for al fresco dining and informal gatherings.

Together they create a lifestyle centred on seasonality, enjoyment and a closer connection to the land.



Extensive ancillary accommodation

Space for every requirement.

Complementing the main house is a collection of ancillary buildings and supporting structures designed to serve the practical needs of modern estate living.

Extensive vehicle accommodation, workshops, storage facilities and estate buildings have been thoughtfully integrated within the wider composition of the property, ensuring functionality is delivered without compromise.

As with the principal residence, these structures have been designed with longevity, purpose and architectural consistency in mind.

Together they contribute to the seamless operation of the estate whilst reinforcing the sense of completeness that defines Greenhill.







Formal Gardens.

Structure, symmetry and seasonality.

The formal gardens provide one of Greenhill's defining landscape features. Carefully arranged around a series of geometric axes and pathways, they create a strong visual relationship between house and landscape, bringing order, structure and elegance to the wider estate.

Manicured hedging, ornamental planting and carefully framed vistas provide interest throughout the seasons, whilst the symmetry of the design reinforces the architectural rhythm of the house itself.

The result is a landscape that feels both timeless and deeply considered.





Woodland & Grounds.



Space, privacy and stewardship.

Extending across approximately forty acres, the wider grounds form an integral part of the Greenhill estate.

Mature woodland, open pasture and carefully maintained landscape provide a remarkable sense of privacy and seclusion, creating a natural setting rarely encountered within such an accessible location.

A network of paths and clearings encourages exploration and connection with the landscape, whilst the diversity of the grounds supports a rich variety of wildlife throughout the year.

Together, they provide a setting of exceptional beauty, scale and permanence.







Greenhill is a private estate of exceptional quality, shaped by a remarkable vision and realised through outstanding architecture, craftsmanship and landscape design.

Set within approximately forty acres of gardens, woodland and countryside, it represents one of Leicestershire's most significant modern private estates.

Exclusively represented by REZIDE.

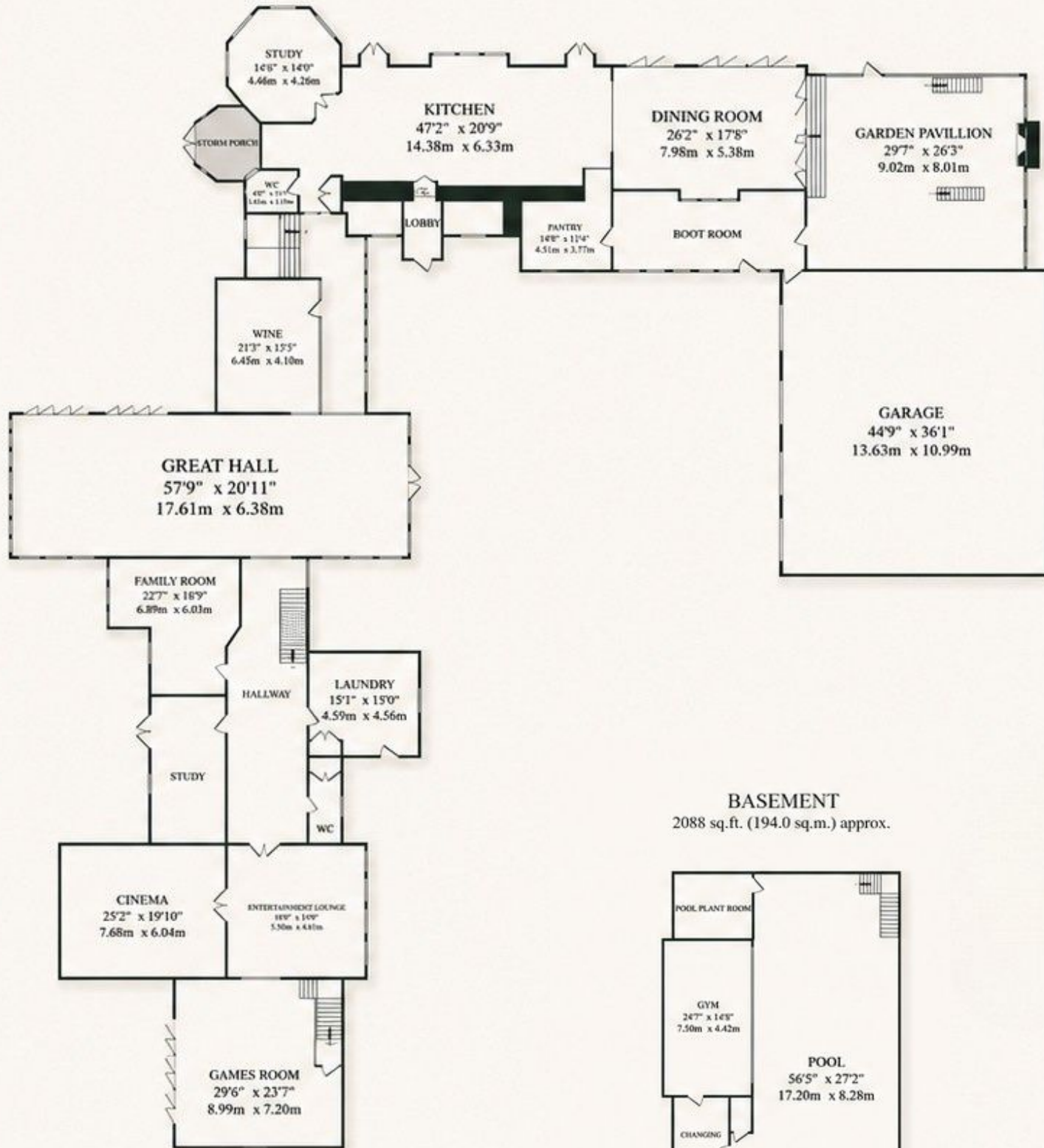








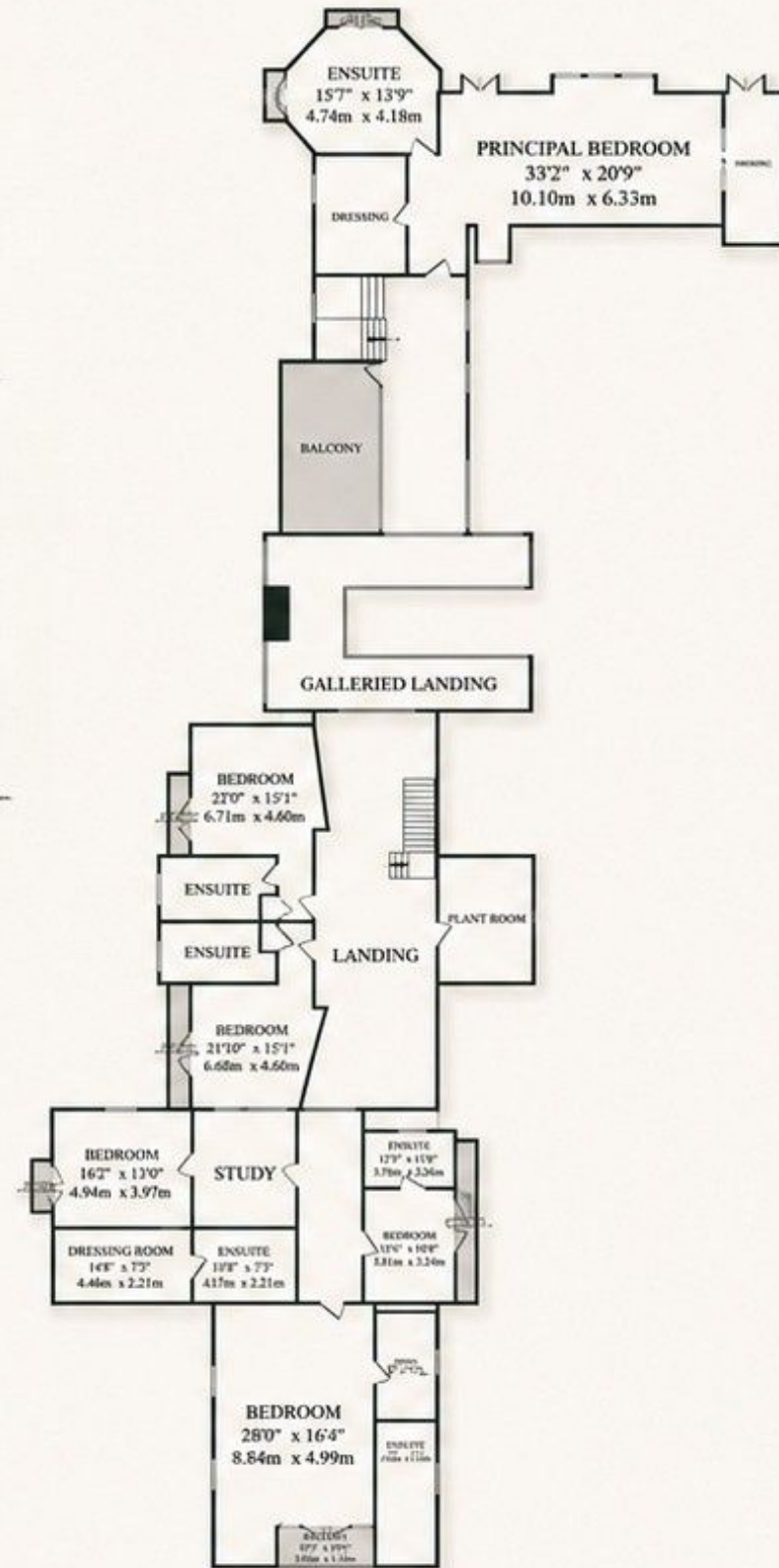
GROUND FLOOR
9021 sq.ft. (838.1 sq.m.) approx.



BASEMENT
2088 sq.ft. (194.0 sq.m.) approx.



1ST FLOOR
4502 sq.ft. (418.3 sq.m.) approx.







GREENHILL